



2023 annual report to the Community

Kadina Memorial School

Kadina Memorial School number: 778

Partnership: Northern Yorke



School principal:

Alistair Williams

Signature

Date of endorsement:

28/02/2024



Context Statement

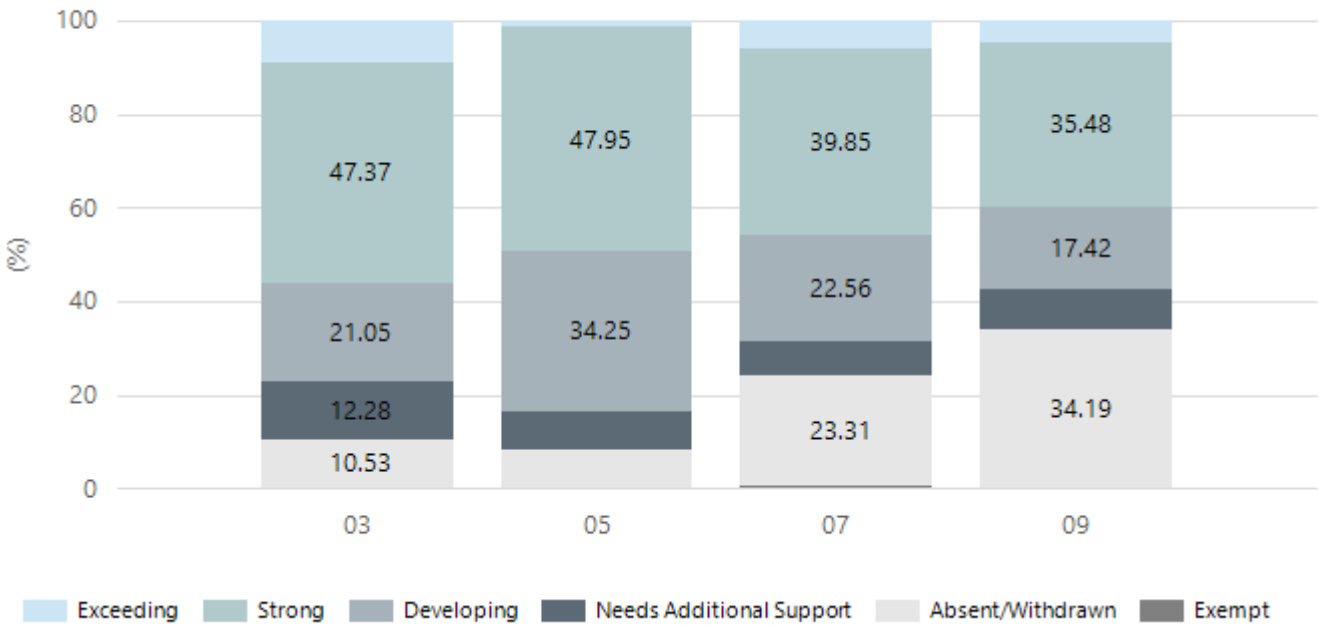
Kadina Memorial School caters for students from R-12. At the time of this report, the enrolment in 2023 is 1204. Kadina Memorial School is classified as Category 4 on the Department for Education Index of Educational Disadvantage. At the time of this report, the school population includes 10% Aboriginal students, 11% students with disabilities, 2% children/young people in care. Further information about the school is available on the school's website (including its context statement), as well as the My School website.

Performance Summary

NAPLAN Proficiency

In 2023, the Australian Curriculum, Assessment and Reporting Authority (ACARA) - a Commonwealth Independent statutory authority - announced changes to NAPLAN performance reporting. This new way of reporting by ACARA that NAPLAN results from 2023 will not be comparable to previous years. The new approach replaces the previous numerical NAPLAN bands and the national minimum standard.

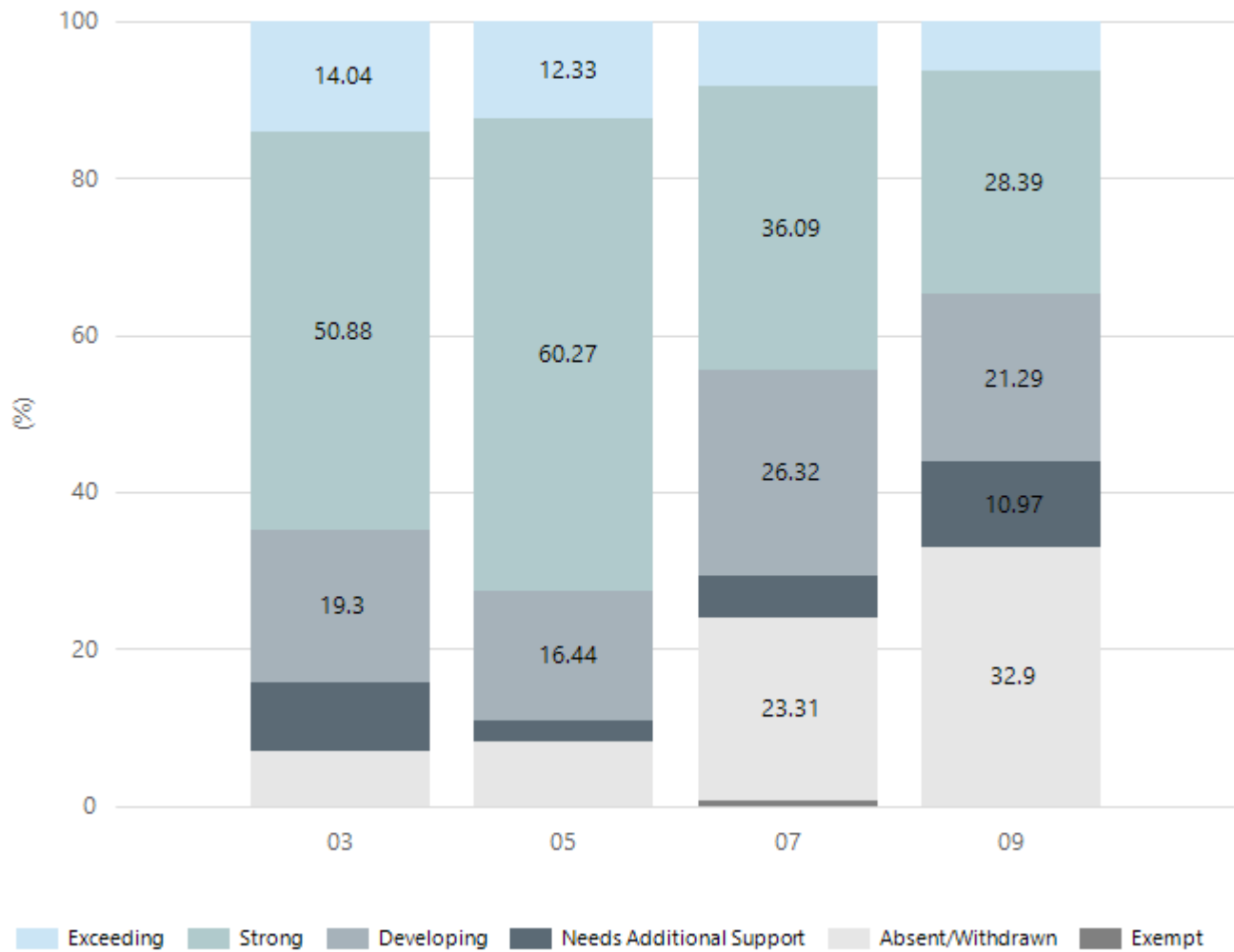
Numeracy



Year Level	03	05	07	09
Exceeding	5	1	8	7
Strong	27	35	53	55
Developing	12	25	30	27
Needs Additional Support	7	6	10	13
Absent/Withdrawn	6	6	31	53
Exempt			1	
Total	57	73	133	155

Data Source: Department for Education Assessment Data Holdings, 2023. When there are less than six students in a cohort, no data is supplied.

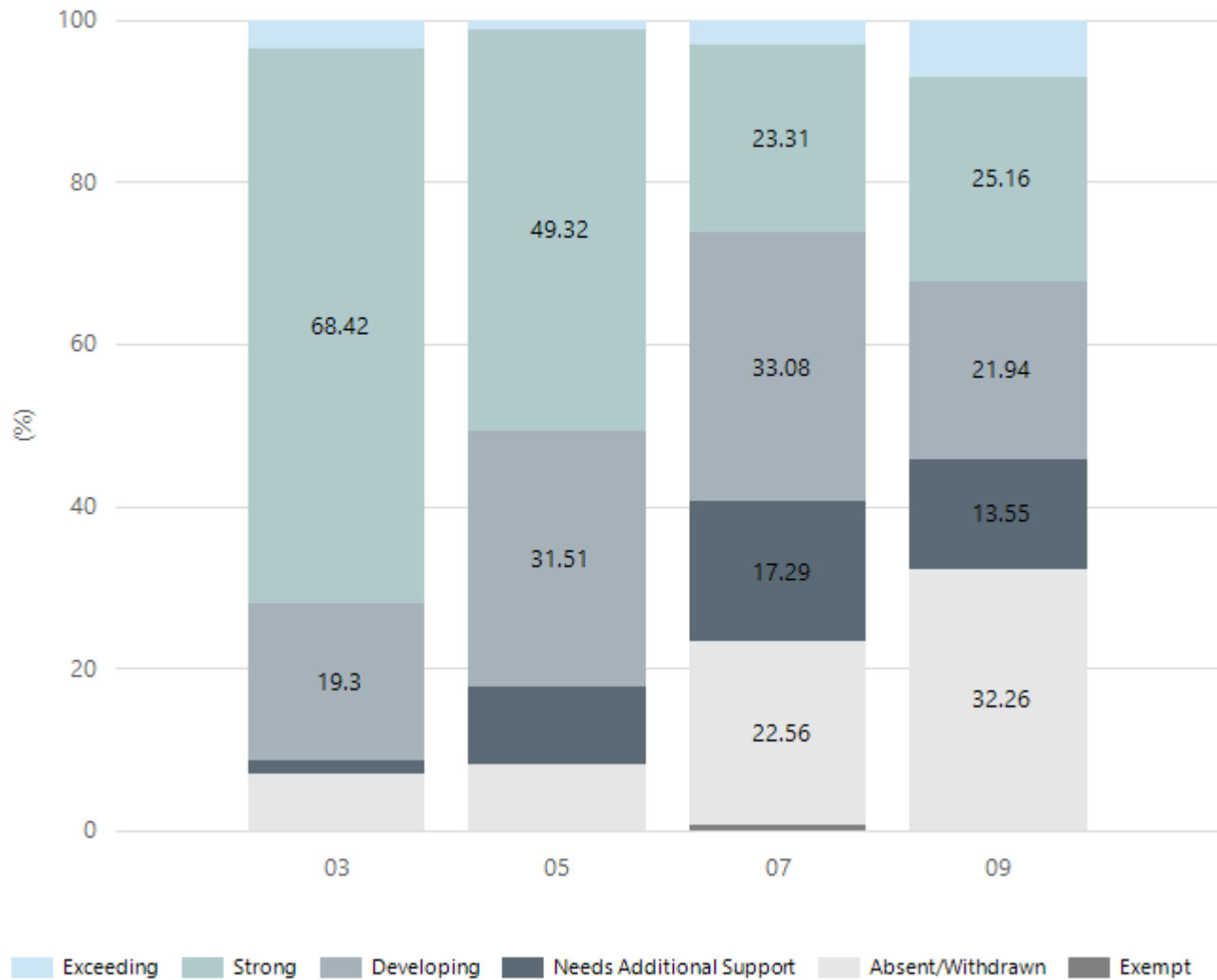
Reading



Year Level	03	05	07	09
Exceeding	8	9	11	10
Strong	29	44	48	44
Developing	11	12	35	33
Needs Additional Support	5	2	7	17
Absent/Withdrawn	4	6	31	51
Exempt			1	
Total	57	73	133	155

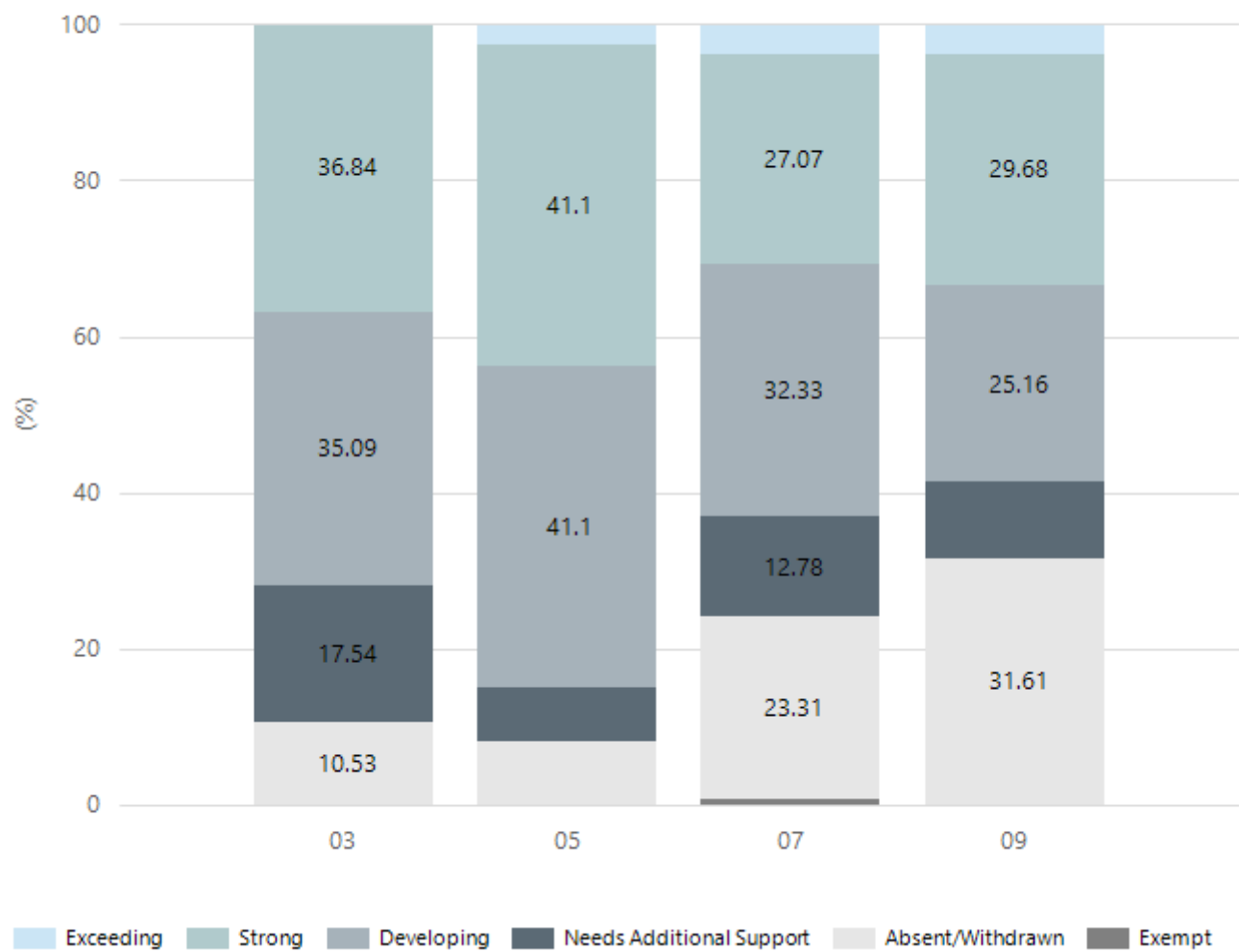
Data Source: Department for Education Assessment Data Holdings, 2023. When there are less than six students in a cohort, no data is supplied.

Writing



Year Level	03	05	07	09
Exceeding	2	1	4	11
Strong	39	36	31	39
Developing	11	23	44	34
Needs Additional Support	1	7	23	21
Absent/Withdrawn	4	6	30	50
Exempt			1	
Total	57	73	133	155

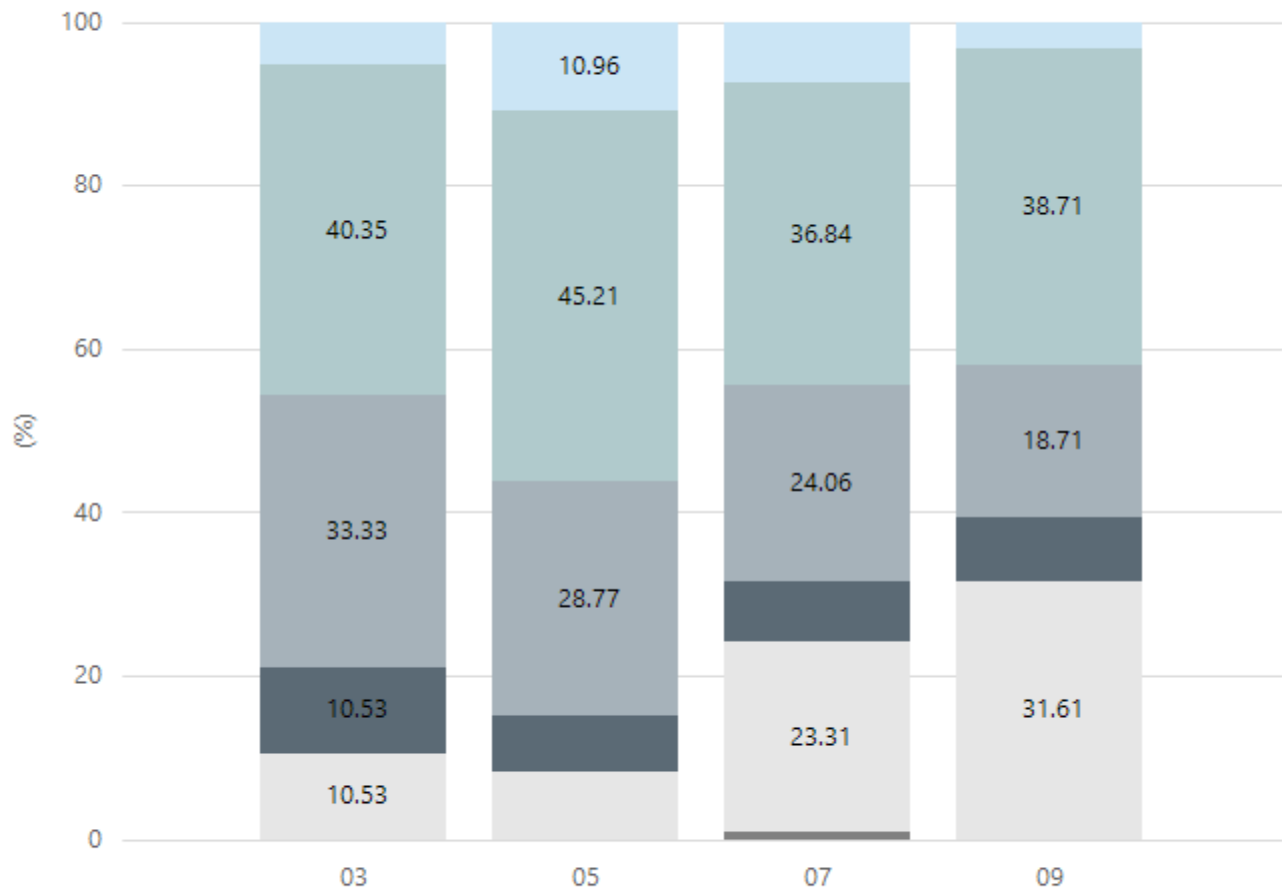
Data Source: Department for Education Assessment Data Holdings, 2023. When there are less than six students in a cohort, no data is supplied.



Year Level	03	05	07	09
Exceeding		2	5	6
Strong	21	30	36	46
Developing	20	30	43	39
Needs Additional Support	10	5	17	15
Absent/Withdrawn	6	6	31	49
Exempt			1	
Total	57	73	133	155

Data Source: Department for Education Assessment Data Holdings, 2023. When there are less than six students in a cohort, no data is supplied.

Spelling



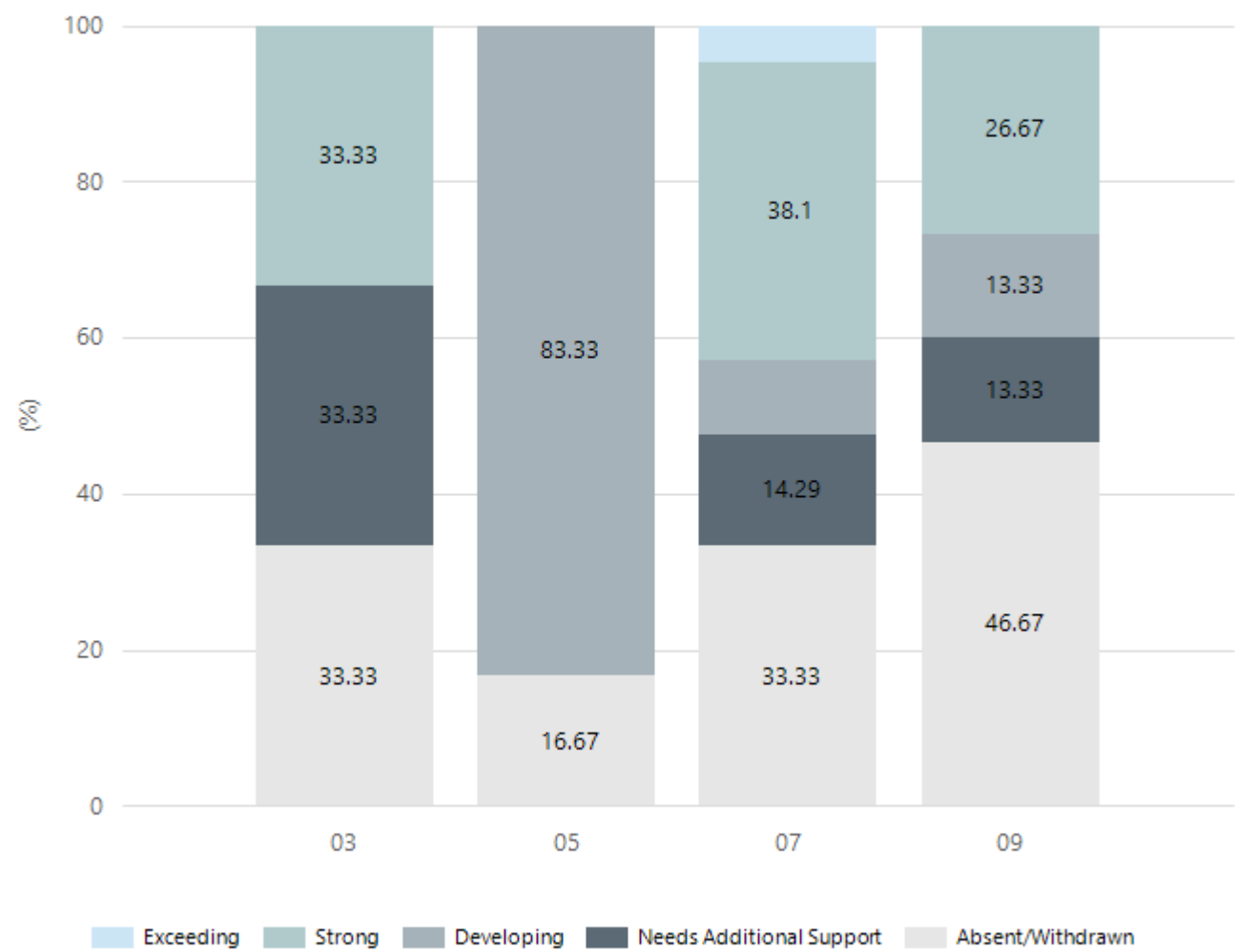
Exceeding Strong Developing Needs Additional Support Absent/Withdrawn Exempt

Year Level	03	05	07	09
Exceeding	3	8	10	5
Strong	23	33	49	60
Developing	19	21	32	29
Needs Additional Support	6	5	10	12
Absent/Withdrawn	6	6	31	49
Exempt			1	
Total	57	73	133	155

Data Source: Department for Education Assessment Data Holdings, 2023. When there are less than six students in a cohort, no data is supplied.

NAPLAN Proficiency - Aboriginal Learners

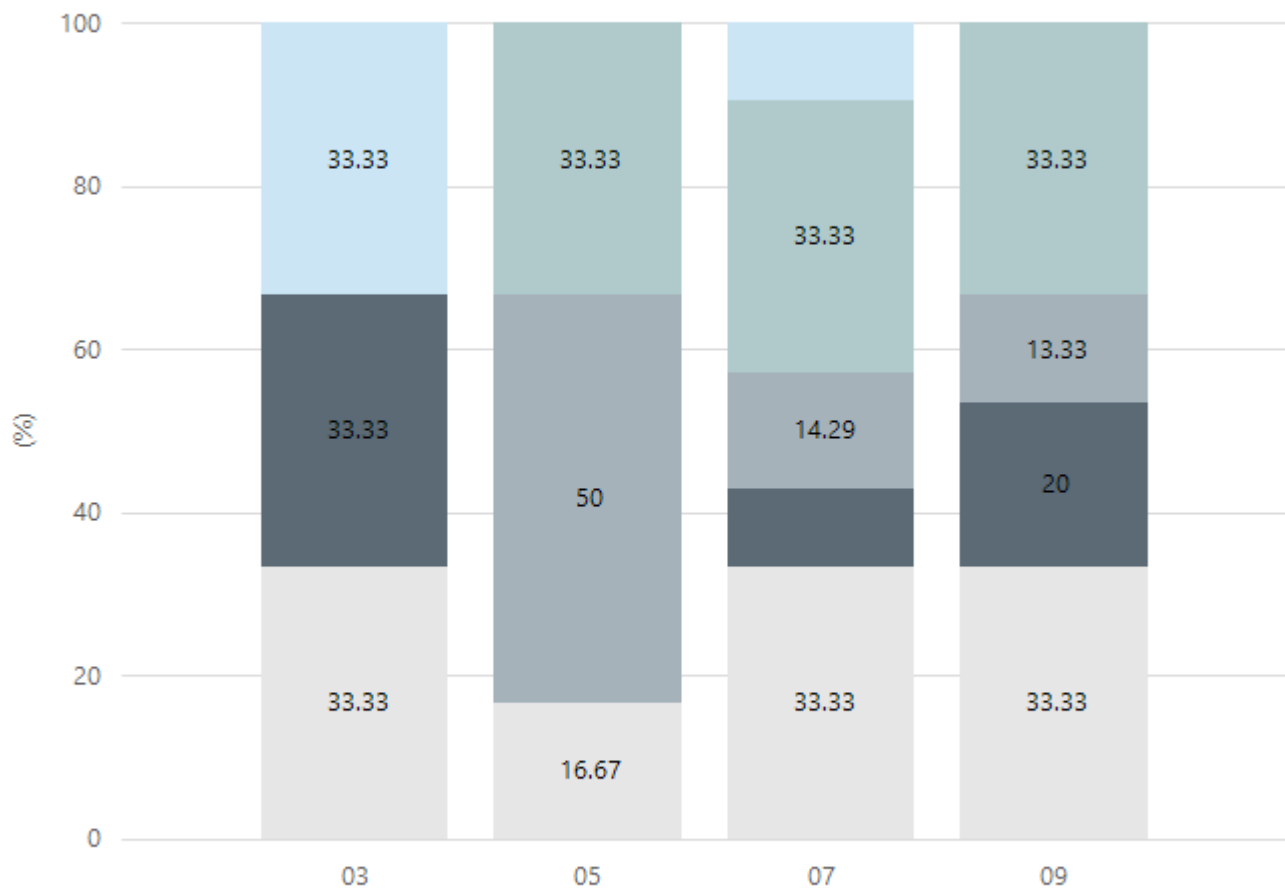
Numeracy



Year Level	03	05	07	09
Exceeding			1	
Strong	1		8	4
Developing		5	2	2
Needs Additional Support	1		3	2
Absent/Withdrawn	1	1	7	7
Total	3	6	21	15

Data Source: Department for Education Assessment Data Holdings, 2023. When there are less than six students in a cohort, no data is supplied. Only data for Aboriginal learners is displayed.

Reading

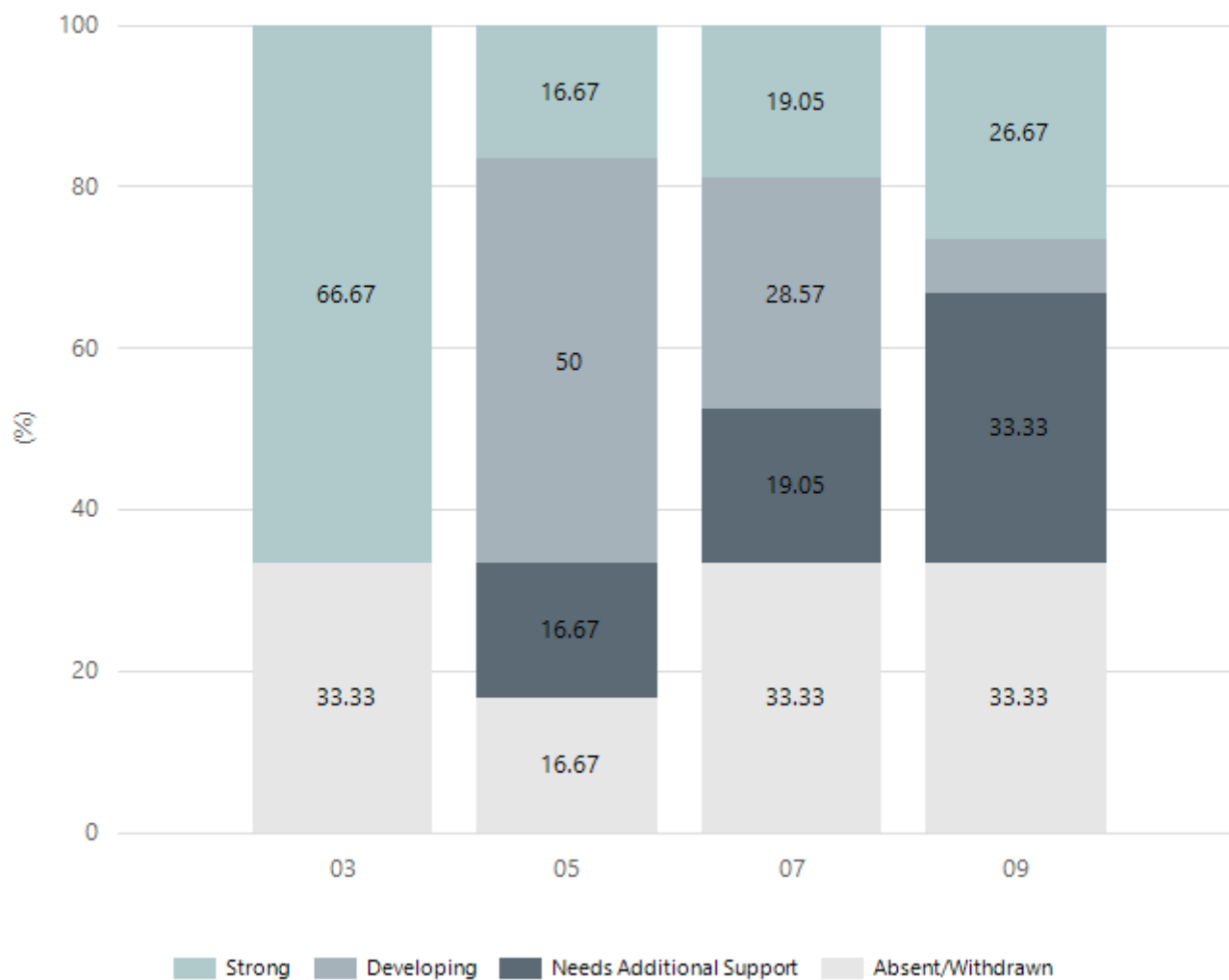


Exceeding Strong Developing Needs Additional Support Absent/Withdrawn

Year Level	03	05	07	09
Exceeding	1		2	
Strong		2	7	5
Developing		3	3	2
Needs Additional Support	1		2	3
Absent/Withdrawn	1	1	7	5
Total	3	6	21	15

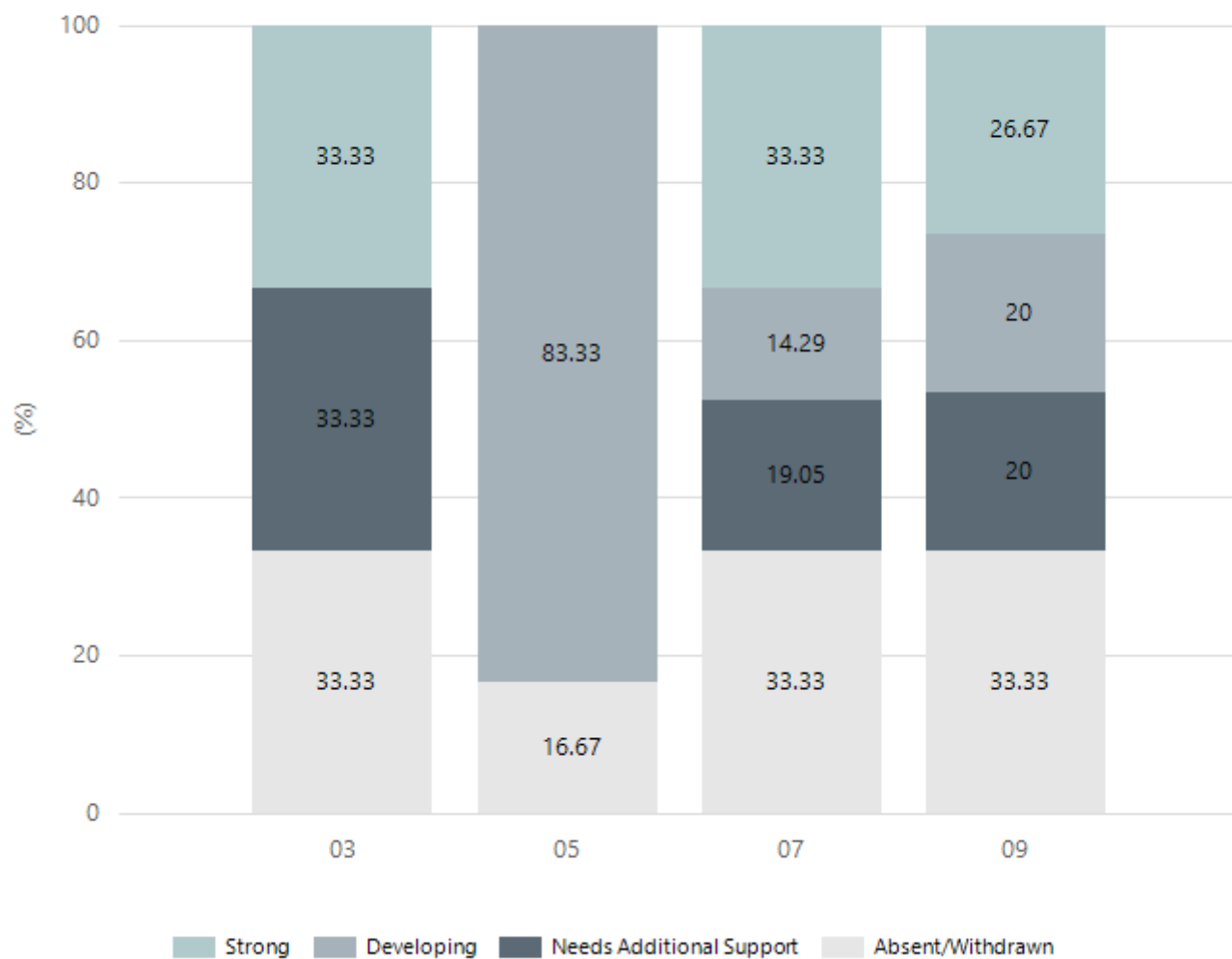
Data Source: Department for Education Assessment Data Holdings, 2023. When there are less than six students in a cohort, no data is supplied. Only data for Aboriginal learners is displayed.

Writing



Year Level	03	05	07	09
Strong	2	1	4	4
Developing		3	6	1
Needs Additional Support		1	4	5
Absent/Withdrawn	1	1	7	5
Total	3	6	21	15

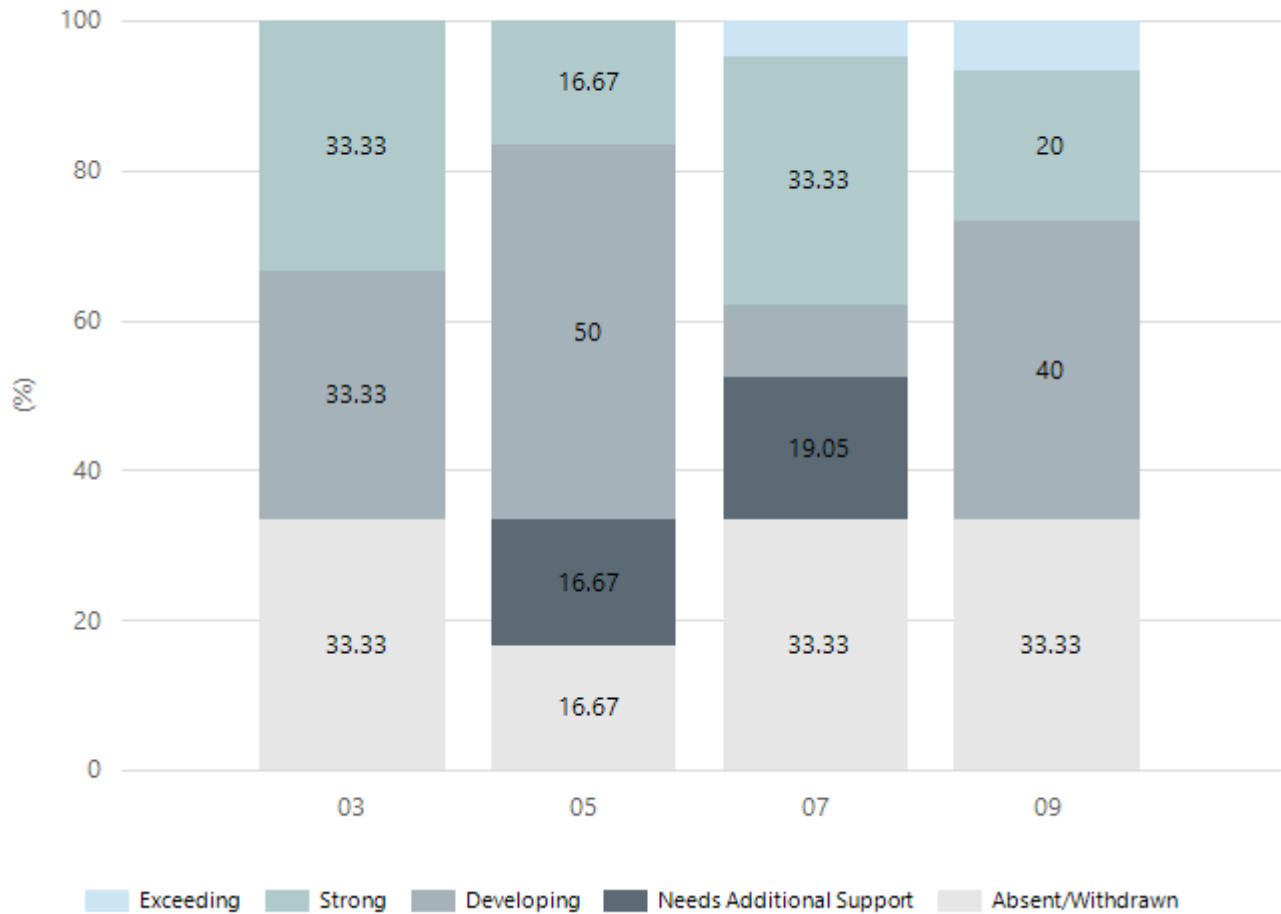
Data Source: Department for Education Assessment Data Holdings, 2023. When there are less than six students in a cohort, no data is supplied. Only data for Aboriginal learners is displayed.



Year Level	03	05	07	09
Strong	1		7	4
Developing		5	3	3
Needs Additional Support	1		4	3
Absent/Withdrawn	1	1	7	5
Total	3	6	21	15

Data Source: Department for Education Assessment Data Holdings, 2023. When there are less than six students in a cohort, no data is supplied. Only data for Aboriginal learners is displayed.

Spelling



Year Level	03	05	07	09
Exceeding			1	1
Strong	1	1	7	3
Developing	1	3	2	6
Needs Additional Support		1	4	
Absent/Withdrawn	1	1	7	5
Total	3	6	21	15

Data Source: Department for Education Assessment Data Holdings, 2023. When there are less than six students in a cohort, no data is supplied. Only data for Aboriginal learners is displayed.

South Australian Certificate of Education - SACE

SACE Stage 2 Grades - Percentage of grades that are C- or above for attempted SACE subjects (SEA)

2020	2021	2022	2023
100%	100%	100%	99%

Data Source: SACE School Data Reports, as of February 2023 for 2020-2022. 2023 SACE results are School supplied data. When there are less than six students, no data is supplied. Due to rounding of percentages, total results may not add up to 100%.

SACE Stage 2 Grade Distribution

Grade	2020	2021	2022	2023
A+	2%	1%	2%	3.16%
A	8%	5%	7%	8.23%
A-	9%	12%	11%	13.92%
B+	13%	14%	14%	12.66%
B	17%	17%	13%	13.92%
B-	11%	17%	19%	14.87%
C+	17%	16%	15%	16.14%
C	21%	16%	15%	13.29%
C-	3%	2%	3%	2.85%
D+	0%	0%	0%	0.95%

Data Source: SACE School Data Reports, as of February 2023 for 2020-2022. 2023 SACE results are School supplied data. When there are less than six students, no data is supplied. Due to rounding of percentages, total results may not add up to 100%.

SACE Completion - Percentage of completers out of those students who had the potential to complete their SACE in October that year

2020	2021	2022	2023
100%	100%	99%	97%

Data Source: SACE School Data Reports, as of February 2023 for 2020-2022. 2023 SACE results are School supplied data. When there are less than six students, no data is supplied. Due to rounding of percentages, total results may not add up to 100%.

Year 12 Students undertaking Vocational or Trade Training (VET)

	2021	2022	2023
Percentage of Year 12 students undertaking Vocational Training or Trade Training	60.24%	46.48%	25.00%
Percentage of Year 12 students attaining a Year 12 certificate or equivalent VET qualification	60.24%	46.48%	25.00%

Data Source: School supplied data

School Attendance

Year Level	2021	2022	2023
Reception	87.9%	86.4%	87.4%
Year 01	92.0%	81.3%	87.7%
Year 02	89.7%	87.2%	85.1%
Year 03	90.2%	87.0%	88.3%
Year 04	91.0%	87.0%	87.9%
Year 05	88.9%	85.1%	88.1%
Year 06	90.8%	87.0%	87.1%
Year 07	88.0%	86.0%	85.7%
Year 08	86.2%	82.1%	83.4%
Year 09	84.0%	81.5%	80.2%
Year 10	82.4%	76.4%	79.4%
Year 11	78.8%	75.5%	77.9%
Year 12	90.4%	78.4%	81.9%
Primary Other	68.9%	68.6%	73.8%
Secondary Other	76.3%	71.8%	78.9%
Total	86.6%	82.1%	83.7%

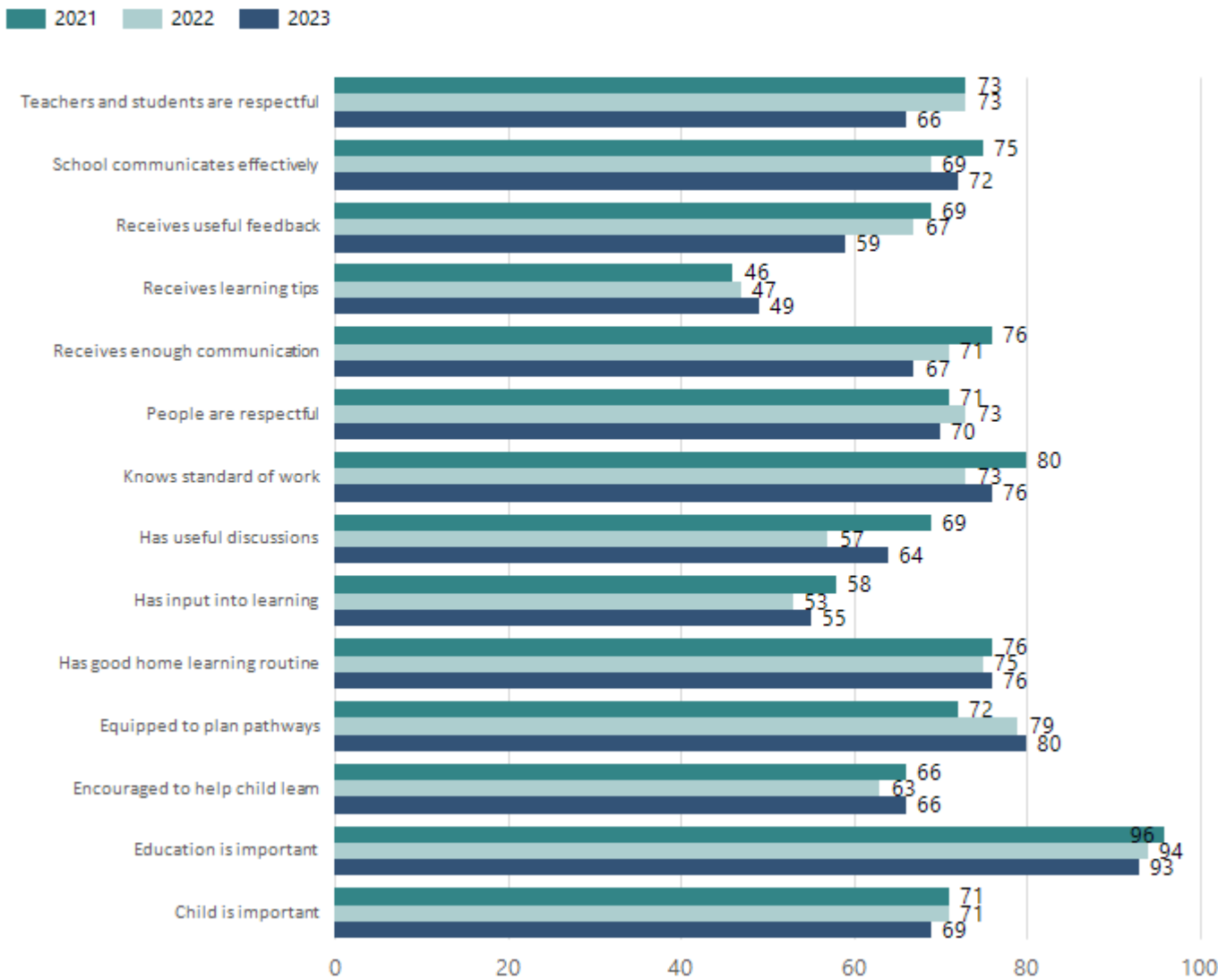
Data Source: Department for Education Attendance Data, Semester 1 Report 2023. A blank cell indicates there we no students enrolled. 'Primary Other' includes students enrolled in specialised education options. 'Secondary Other' includes students who have already spent a year at Year 12 and elected to undertake further study at Year 12.

Attendance Comment

In South Australia, all children and young people must be in school from 6 years to 16 years old. They must attend a government or non-government school full time. From age 16 to 17 however, young people must attend school or an approved learning program (such as an apprenticeship, traineeship, accredited course or university). Schools and parents must encourage and support students to come to school every day. Parents and caregivers must make sure their child is enrolled in a school, and attends school all day and everyday it is open, unless a child is sick or has an approved exemption. Teachers and leaders actively follow up when a student misses school, including recording all absences and non-attendance. All schools in South Australia have local attendance procedures governed under the Education and Children's Services Regulations 2020.

Parent Opinion Survey Results

Proportion of agree/strongly agree response(%)



Data Source: 2023 Department for Education Parent Opinions Survey, Term 3 2023.

Intended Destination

Leave Reason	Number	%
NG - ATTENDING NON-GOV SCHOOL IN SA	15	16.0%
NS - LEFT SA FOR NSW	3	3.0%
PE - PAID EMPLOYMENT IN SA	24	25.0%
SM - SEEKING EMPLOYMENT IN SA	6	6.0%
TG - TRANSFERRED TO SA GOVERNMENT SCHOOL	34	35.0%
U - UNKNOWN	6	6.0%

Data Source: Department for Education Destination Data Report, 2023. Data extract term 3 2023. Data shows recorded destinations for students that left the school in the previous year. Data is uploaded by schools in term 3 and may not reflect final or total figures at time of report creation.

Highest Qualifications held by the teaching workforce and workforce composition

All teachers at this school are qualified and registered with the SA Teachers Registration Board.

Qualification Level	Number of Qualifications
Bachelor's degrees or Diplomas	77
Postgraduate Qualifications	31

Data Source: Data extracted from Mandatory Workforce Information Collections as on the last pay date of June 2023. As self-reported by staff in the system.

Please note: Data includes staff who are Actively employed and on extended paid leave. Please note only the highest qualification of the Teaching staff is reported. Excludes any number of other certifications earned.

Workforce composition including indigenous staff

	Teaching Staff		Non-Teaching Staff	
	Indigenous	Non-Indigenous	Indigenous	Non-Indigenous
Full-Time Equivalents	0.4	93.7	1.7	48.6
Persons	1.0	109.0	2.0	74.0

Data Source: Data extracted from Mandatory Workforce Information Collection as on the last pay date of June 2023.

Please note: Data includes staff who are actively employed and on extended paid leave.

"Indigenous category" is self-reported by staff in the system.

Financial Statement

Funding Source	Amount
Grants: State	\$17,024,467.13
Grants: Commonwealth	\$27,280.00
Parent Contributions	\$502,214.95
Fund Raising	\$12,274.60
Other	\$294,291.32

Data Source: School supplied data.